

# Company Introduction

- ❖ Technological Innovation
- ❖ Leading the Future

**Dongguan Yixin Machinery Co., Ltd.**



# CONTENTS

PART 01



**ABOUT US**

PART 02



**PRODUCTS**

PART 03



**CUSTOMERS**

PART 04



**CONTACT US**

# PART 01

PART 01



ABOUT US





## Dongguan Yixin Machinery Co., Ltd.

📍 Houjie Town, Dongguan City | 🏠 12,000 m<sup>2</sup>

**High-tech enterprise** integrating **R&D, production, sales & service**, offering **efficient, customized non-standard automation solutions**.

🔧 **Specialization:** Wire harness end-processing automation

📦 **Products:** Fully automatic wire harness inserting, terminal crimping, tinning, new energy cable crimping machines, 20+ others

👤 **Team:** 10+ years experience, innovative, with **technology & service** at core

💡 **Business Philosophy:** Value for customers • Employee support • Lead industry

✅ **Quality Policy:** Customer-oriented, fully responsible

⚙️ **Management Philosophy:** Craftsmanship • Meticulous • Pursuit of excellence

**Integrity first, win-win cooperation, and pragmatic innovation.**



## DEVELOPMENT HISTORY

**2017**

Company founded; started with auxiliary equipment for manual wire harness processing.

**2018**

Dedicated R&D team formed; launched China's first fully automated single-core shell insertion machine.

**2019**

Full-scale mass production of shell insertion machines; integrated machine vision for inspections; terminal crimping yield reached 99.95%.

**2020**

Expanded into home appliance and automotive wire harness markets; achieved top industry stability and production capacity; awarded National High-Tech Enterprise.

**2022**

Focused on high-end sectors like new energy vehicles; developed intelligent production lines.

**2021**

Established Jiangsu office; provided local customers (Jiangsu, Shanghai, Zhejiang) with faster service and support.

**2023**

Opened Chongqing office; enhanced support for customers in Sichuan, Chongqing, Guizhou.

**2024**

Entered drone and robotics wire harness equipment sectors; established "automotive + emerging industries" strategy; annual sales exceeded 100 million RMB; patents reached 50+.



## Corporate Mission

**Every step, big or small,  
advances human progress.**

## Corporate Purpose

**Develop employees,  
empower customers, reward  
shareholders, and  
strengthen the nation.**

## Core Values

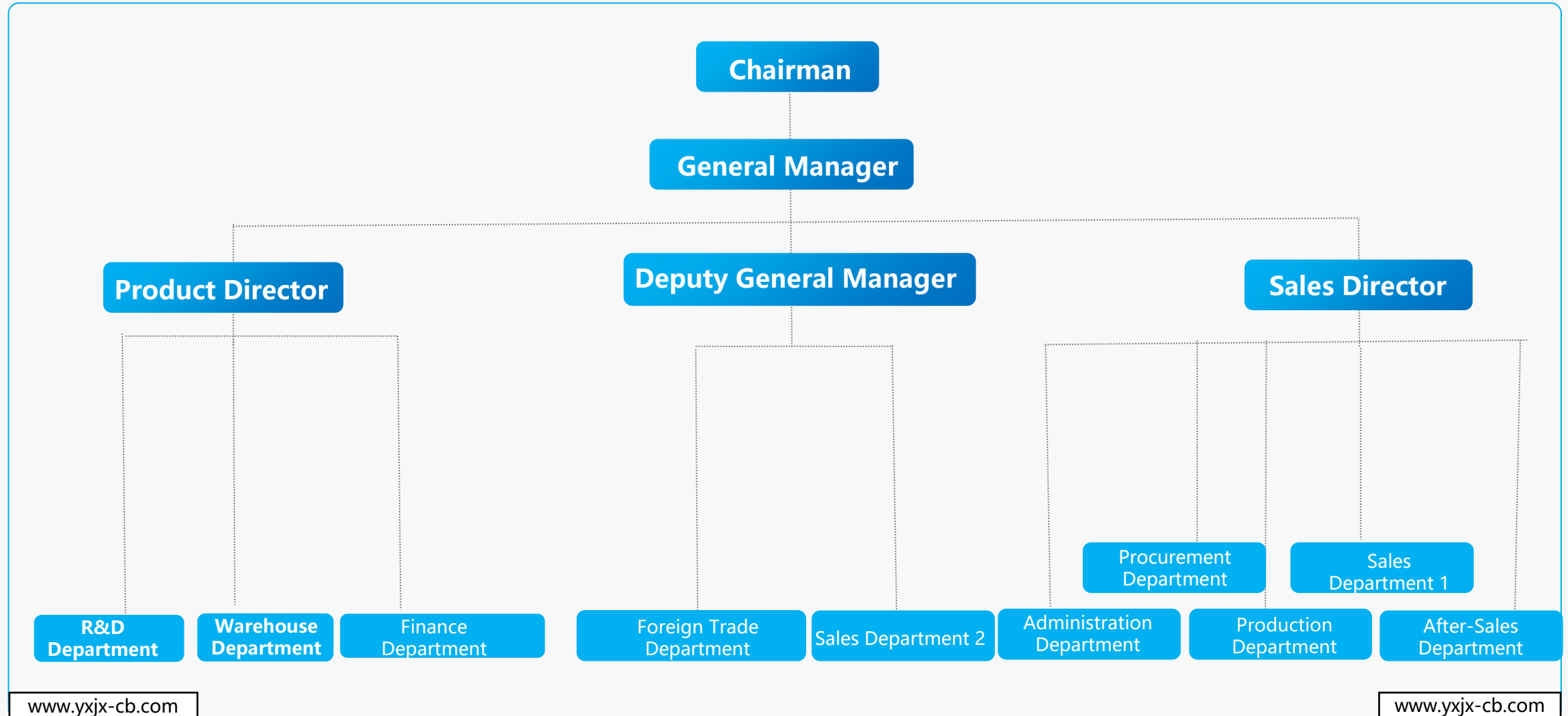
**Integrity First, Win-Win  
Cooperation, Pragmatic  
Innovation**

## Business Philosophy

**Create Value for Customers,  
Improve Employee Welfare,  
Lead the Wire Harness  
Inserting Machine Industry**



## ORGANIZATION STRUCTURE





# PART 02

PART 02



## PRODUCTS





**Product Name :** Fully Automatic Combined Wire Harness  
Shell Insertion Machine



**Equipment Model: TYDC-B-D601**

**Product Introduction:**

This fully automatic machine streamlines wire harness assembly by performing multiple functions with high precision. It automatically cuts, strips, crimps, and inserts wires into connector shells. One end of the wire can include additional processes such as heat-shrinking and waterproof plug insertion, while the other end is prepared and inserted into the connector housing. The system ensures consistent quality, reduces manual labor, and maximizes production efficiency.

**Main processing parameters :**

Function: A End stripping, stripping, marking, threading, crimping, and insertion ;

B End stripping, wire stripping, marking and tubing, crimping, and insertion .

Processing Scope: **16AWG-AWG26**, **Processing Length:** Intermediate Glue Length **200-9999mm**

Wire cutting accuracy: **0.5mm**+wire cutting length\***0.2%**, Maximum insertion PIN Color Number :  
30 Color

**Main Equipment Configuration :**

1. Control System : **Inovance**
2. Servo Motor: Inovance
3. Cylinder: Taiwan Airtac
4. Fiber optic amplifier : Panasonic Japan
5. Transmission Module : Yaohua ( Equipped with Taiwan HIWIN ball screw guide rail )



**Product Name :** Fully Automatic Double-Head Shell Insertion Machine.

## Equipment Model: TYDC-B-B601

### Product Introduction:

This fully automatic double-end wire insertion machine performs cutting, stripping, crimping, and terminal insertion on both ends of the wire. Equipped with dual CCD cameras, it inspects the appearance of crimped terminals and checks for any loose wires, ensuring high precision, consistent quality, and reliable production.

### Main Processing Parameters:

Function: **A** End cutting, stripping, crimping, terminal **CCD** inspection, insertion;

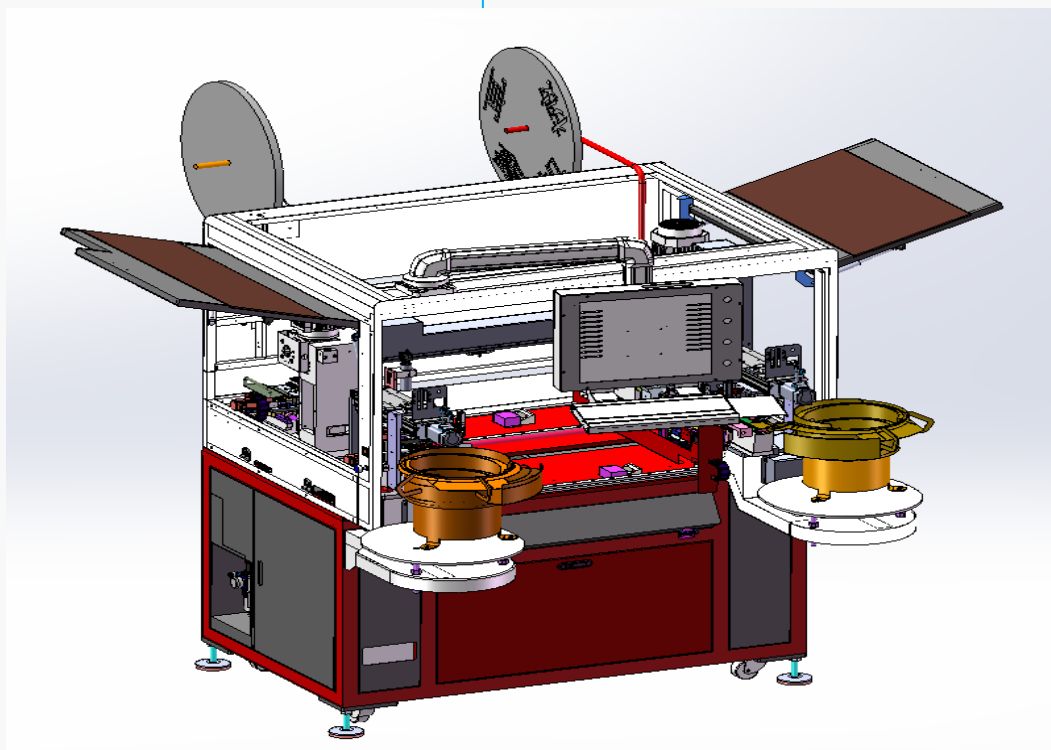
**B** End cutting, stripping, crimping, terminal **CCD** inspection, insertion .

Processing Scope: **16AWG-30AWG**, Processing Length: Intermediate glue length **80-900mm**

Wire cutting accuracy:**0.5mm**+wire cutting length\***0.2%**, Maximum number of **PIN** colors :8 color

### Main Equipment Configuration:

1. Control System: Inovance
2. Servo Motor: Inovance
3. Cylinder: Taiwan Airtac
4. Fiber optic amplifier: Panasonic Japan
5. Transmission Module: Yaohua ( Equipped with Taiwan HIWIN ball screw guide rail )





**Product Name :** Fully Automatic Double-Head Shell Insertion Machine.



## Equipment Model: TYDC-F-B602

### Product Introduction:

This fully automatic double-end shell insertion machine automatically cuts, strips, terminates, and inserts shells at both ends of the wire. Equipped with a four-lens **CCD** detector, it can inspect the number of copper strands, ensuring high precision, consistent quality, and reliable production.

### Main Processing Parameters:

Function: **A** End wire cutting and stripping, **CCD** inspection, crimping, terminal **CCD** check, and insertion. **B** End cut the wire and strip the insulation, **CCD** inspection, crimping, terminal **CCD**, insertion.

Processing Scope: **16AWG-30AWG**, Processing length: Intermediate glue length **80-900mm**.

Wire cutting accuracy: **0.5mm**+wire cutting length\***0.2%**, Maximum number of **PIN** colors: 8 color.

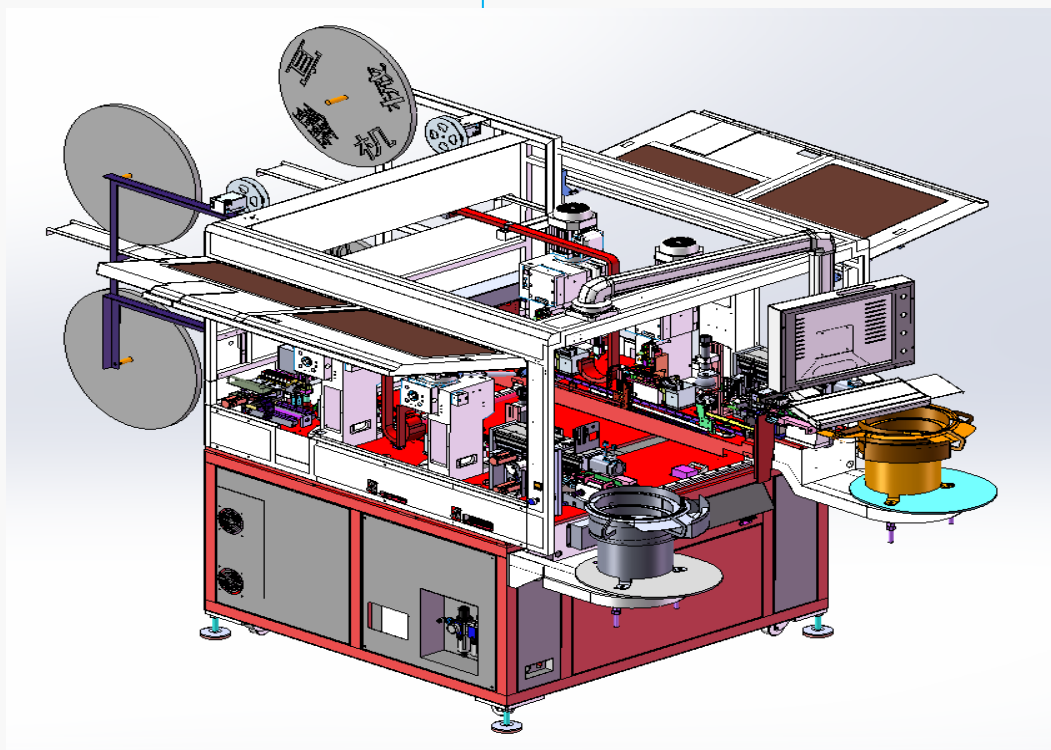
### Main Equipment Configuration:

1. Control System : Inovance
2. Servo Motor : Inovance
3. Cylinder: Taiwan Airtac
4. Fiber optic amplifier : Panasonic Japan
5. Transmission Module : Yaohua (Equipped with Taiwan HIWIN ball screw guide rails)





## Product Name : Fully Automatic Dual-End Waterproof Connector Assembly Machine with CCD Inspection



### Equipment Model: TYDC-B-B603

#### Product Introduction:

This fully automatic double-end wire harness insertion machine performs cutting, stripping, waterproof plug insertion, terminal crimping, and shell insertion at both ends of the wire.

Equipped with **CCD** inspection, it ensures that each terminal and connection meets high-quality standards, providing consistent precision and reliable production.

#### Main Processing Parameters:

Function: **A** End stripping, inserting waterproof plug, crimping, terminal **CCD** inspection, insertion; **B** End stripping, waterproof plug insertion, crimping, terminal CCD inspection, and insertion.

Processing Scope: **16AWG-30AWG**, Processing length: Intermediate Module **80-900mm**

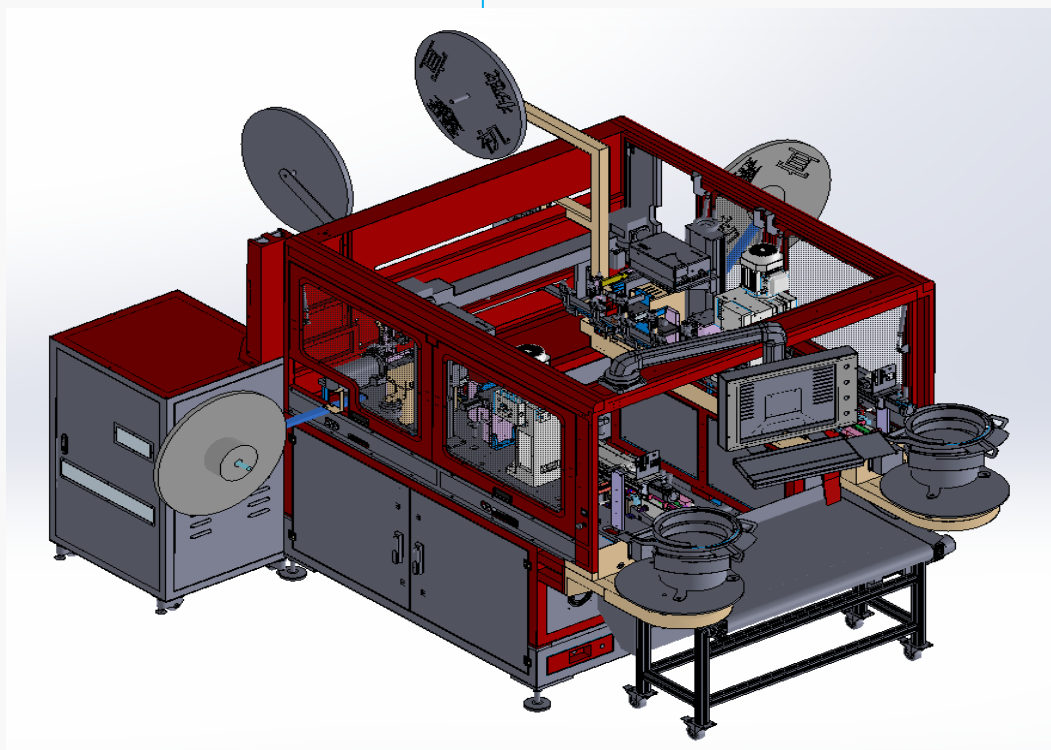
Wire cutting accuracy: **0.5mm**+wire cutting length\***0.2%**, Maximum number of **PIN** colors: 8 color

#### Main Equipment Configuration:

1. Control System: Inovance
2. Servo Motor : Inovance
3. Cylinder : Taiwan Airtac
4. Fiber optic amplifier : Panasonic Japan
5. Transmission Module : Yaohua ( Equipped with Taiwan HIWIN ball screw guide rail )



## Product Name : Fully Automatic Dual-End Laser Marking and Heat-Shrink Tubing Machine



### Equipment Model: TYDC-B-B605

#### Product Introduction:

This fully automatic double-end wire casing insertion machine performs wire cutting, laser marking, tubing and heat-shrink processing, stripping, terminal crimping, and casing insertion at both ends. Designed for high precision and efficiency, it ensures consistent quality and streamlines wire harness production.

#### Main Processing parameter:

Function: **A** End Cutting, laser marking, heat-shrink tubing, stripping, crimping, **CCD** terminal inspection, and insertion. **B** End Cutting, laser marking, heat-shrink tubing, stripping, crimping, **CCD** terminal inspection, and insertion.

Processing Scope: **16AWG-30AWG**, Processing length: Intermediate Module **120-900mm**

Wire cutting accuracy:  $0.5\text{mm} + \text{wire cutting length} \times 0.2\%$ , Maximum number of **PIN** colors: 8 color .

#### Main Equipment Configuration:

1. Control System : Inovance
2. Servo Motor : Inovance
3. Cylinder : Taiwan Airtac
4. Fiber optic amplifier : Panasonic Japan
5. Transmission Module : Yaohua ( Equipped with Taiwan HIWIN ball screw guide rail )



**Product Name :** Fully Automatic Wire Processing Machine with Tinning & Dual Crimping



## Equipment Model: TYDC-J-C602

### Product Introduction:

Handles both large and small wires. One end is automatically cut, stripped, and tinned; the other is cut, stripped, dual-crimped, and inserted into the shell. Supports two different wires and terminals using the same housing, ensuring precision and efficiency.

### Main Processing Parameter:

Function: **A** End peel, peel, tin-coated ;

**B** End Peel, peel, crimp 1, crimp 2, insertion.

Processing Scope: **16AWG-30AWG**, Processing length: Intermediate Module **40-900mm**

Wire cutting accuracy: **0.5mm+wire cutting length\*0.2%**, Maximum number of **PIN** colors: 8 color

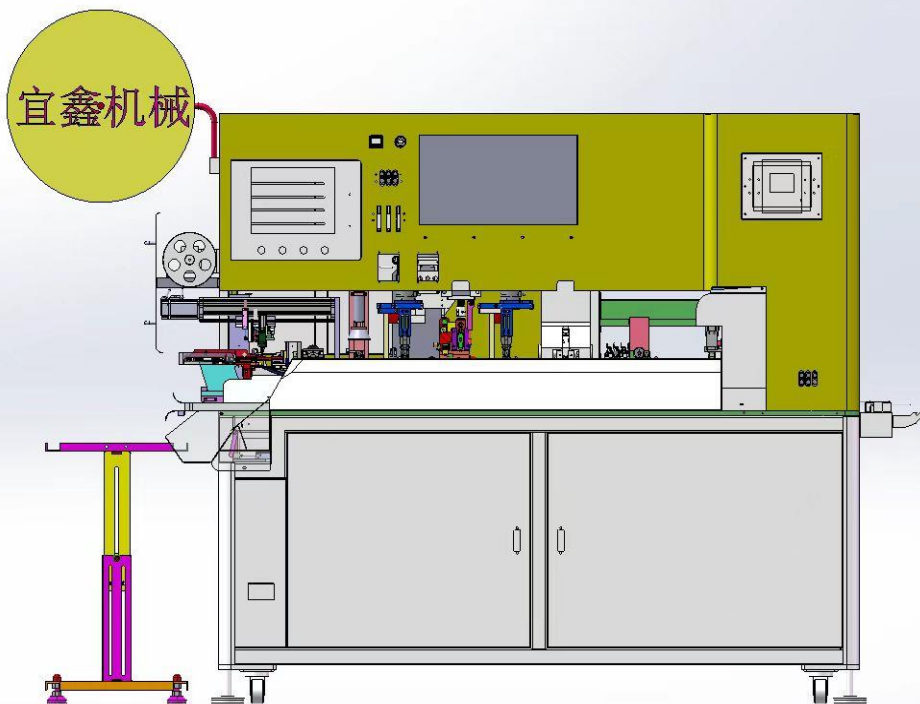
### Main Equipment Configuration:

1. Control System : Inovance
2. Servo Motor : Inovance
3. Cylinder : Taiwan Airtac
4. Fiber optic amplifier : Panasonic Japan
5. Transmission Module : Yaohua ( Equipped with Taiwan HIWIN ball screw guide rail )





**Product Name :** Fully Automatic Wire Processing Machine with Tinning & Waterproof Seals



## Equipment Model: TYDC-J-C603

### Product Introduction:

This fully automatic machine handles complete wire processing. One end of the wire is automatically cut, stripped, and tinned, while the other end is cut, stripped, fitted with a waterproof plug, crimped, and inserted into a shell. Designed for high precision and efficiency, it ensures consistent quality in production.

### Main Processing Parameter:

Function: A End strip and tin ;

B End Strip, insert waterproof plug, crimp, and insert shell .

Processing Scope: 16AWG-30AWG, Processing length: Intermediate Module **40-900mm**

Wire cutting accuracy: **0.5mm**+wire cutting length\***0.2%**, Maximum number of PIN colors: **8** color

### Main Equipment Configuration:

1. Control System : Inovance
2. Servo Motor : Inovance
3. Cylinder : Taiwan Airtac
4. Fiber optic amplifier : Panasonic Japan
5. Transmission Module : Yaohua (Equipped with Taiwan HIWIN ball screw guide rail)



**Product Name :** Fully Automatic Single-End Connector Insertion Machine



## Equipment Model: TYDC-J-C605

### Product Introduction:

This equipment is a fully automatic single-end connector insertion machine that can automatically cut, strip, and solder one end of the wire, while automatically cutting, stripping, crimping, and inserting the connector at the other end.

### Main processing parameter:

Function: **A** End strip and tin ;

**B** End Strip, crimp, and insert

Processing Scope: **16AWG-30AWG**, Processing length: Intermediate Module **40-900mm**

Wire cutting accuracy: **0.5mm+** wire cutting length **\*0.2%**, Maximum number of **PIN** colors : 8 color

### Main Equipment Configuration:

1. Control System : Inovance
2. Servo Motor : Inovance
3. Cylinder : Taiwan Airtac
4. Fiber optic amplifier : Panasonic Japan
5. Transmission Module : Yaohua ( Equipped with Taiwan HIWIN ball screw guide rail )



**Product Name :** Fully Automatic Single-End Dual-Wire Connector Insertion Machine



## Equipment Model: TYDC-J-C606

### Product introduction:

Processes dual wires at a single end. One end is automatically cut, stripped, and tinned; the other end is cut, stripped, crimped, and inserted into a connector housing. Crimps dual wires into a single connector with high precision and efficiency.

### Main Processing Parameter:

Function : **A** End strip and tin ;

**B** End Strip, crimp, and insert .

Processing Scope : **16AWG-30AWG**, Processing length: Intermediate Module **40-900mm**

Wire cutting accuracy: **0.5mm+wire cutting length\*0.2%**, Maximum number of **PIN** insertion

Colors: 8 color

### Main Equipment Configuration :

1. Control System : Inovance
2. Servo Motor : Inovance
3. Cylinder : Taiwan Airtac
4. Fiber optic amplifier : Panasonic Japan
5. Transmission Module : Yaohua ( Equipped with Taiwan HIWIN ball screw guide rail )





**Product Name :** Fully Automatic Dual-Head Connector Insertion Machine



## 全自动双打单插胶壳机



## Equipment Model: TYDC-K-A601

### Product Introduction:

Efficiently processes wire harnesses and assembles connectors. One end is cut, stripped, and terminated; the other end is cut, stripped, terminated, and inserted into the connector shell. Ensures high precision and maximum production efficiency.

### Main Processing Parameter:

Function: **A** End Strip and crimp

**B** End Strip, crimp, and insert.

Processing Scope : **16AWG-30AWG**, Processing length: Intermediate Module **40-900mm**

Wire cutting accuracy: **0.5mm+** wire cutting length \***0.2%**, Maximum number of **PIN** colors : 8 color

### Main Equipment Configuration:

1. Control System : Inovance
2. Servo Motor : Invonace
3. Cylinder : Taiwan Airtac
4. Fiber optic amplifier : Panasonic Japan
5. Transmission Module : Yaohua (Equipped with Taiwan HIWIN ball screw guide rail)



**Product Name :** Fully Automatic Dual-Terminal Crimping Machine



## Equipment Model: TYDC-K-A602

### Product Introduction:

This fully automatic double-end wire processing machine features dual-terminal crimping. One end of the wire is cut, stripped, and crimped with two terminals, while the other end is cut, stripped, crimped, and inserted into the connector shell. Supports two terminal specifications with high precision and stable efficiency

### Main Processing Parameter:

Function: **A** End Strip, crimp 1, and crimp 2;

**B** End Strip, crimp, and insert .

Processing Scope: **16AWG-30AWG**, processing length: Intermediate Module 40-900mm

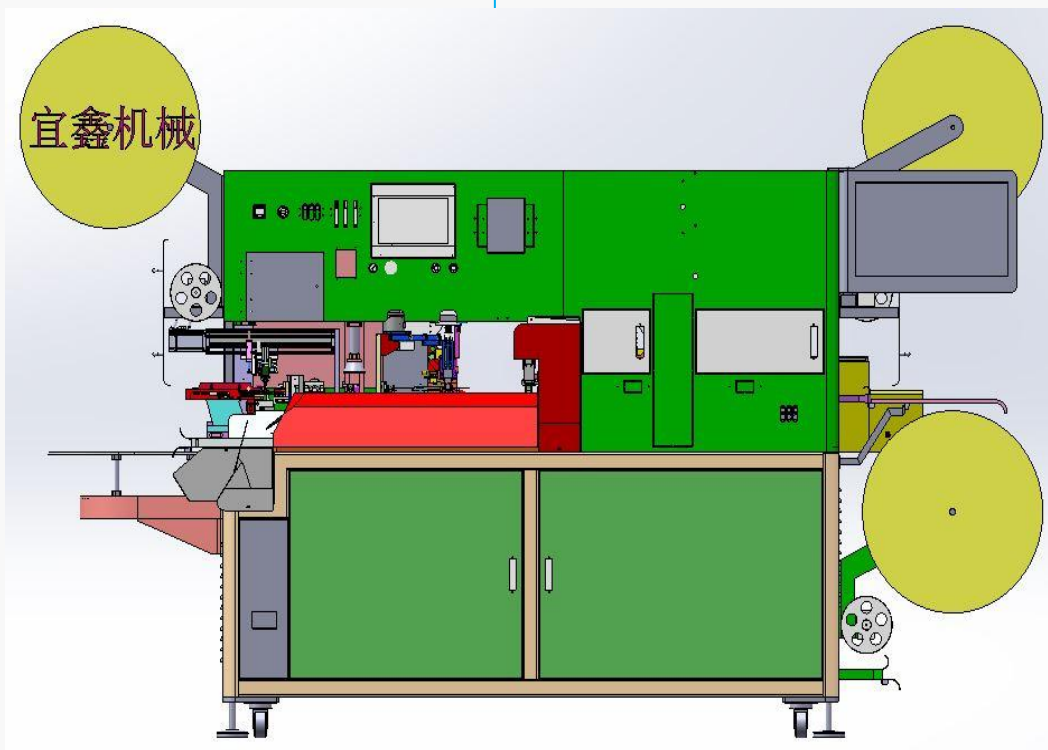
Wire cutting accuracy : **0.5mm**+wire cutting length\***0.2%**, Maximum number of PIN colors : **8** color

### Main Equipment Configuration:

1. Control System : Inovance
2. Servo Motor : Inovance
3. Cylinder : Taiwan Airtac
4. Fiber optic amplifier : Panasonic Japan
5. Transmission Module : Yaohua ( Equipped with Taiwan HIWIN ball screw guide rail )



**Product Name :** Fully Automatic Waterproof Connector Assembly Machine .



## Equipment Model: TYDC-K-A603

### Product Introduction :

This equipment automatically cuts, strips, inserts waterproof plugs, and crimps one end of the wire, while the other end is automatically cut, stripped, crimped, and inserted into the connector shell.

### Main Processing Parameter :

Function: **A** End Strip, insert waterproof plug, and crimp the terminal .

**B** End Strip, crimp, and insert .

Processing Scope : **16AWG-30AWG**, processing length : Intermediate Module **40-900mm**

Wire cutting accuracy: **0.5mm+wire cutting length\*0.2%**, Maximum number of **PIN** colors: **8** color

### Main Processing Configuration:

1. Control System: Inovance
2. Servo Motor : Inovance
3. Cylinder : Taiwan Airtac
4. Fiber optic amplifier : Panasonic Japan
5. Transmission Module : Yaohua ( Equipped with Taiwan HIWIN ball screw guide rail )





**Product Name :** Fully Automatic Dual-End Wire Processing Machine with Marker Tube Threading.



## Equipment Model: TYDC-K-A605

### Product Introduction :

Automatically cuts, strips, and terminates one end of the wire, while the other end is cut, stripped, threaded with number tubes, terminated, and inserted into the connector shell. Ensures high precision, consistent quality, and efficient wire assembly.

### Main Processing Parameter:

Function : A End Strip and crimp

B End strip, strip, insert number tube, crimp, and insert into the connector.

Processing Scope: **16AWG-30AWG**, processing length : Intermediate Module **40-900mm**

Wire cutting accuracy : **0.5mm+wire cutting length\*0.2%**, Maximum number of PIN colors : **8** color

### Main Equipment Configuration:

1. Control System : Inovance
2. Servo Motor : Inovance
3. Cylinder : Taiwan Airtac
4. Fiber optic amplifier : Panasonic Japan
5. Transmission Module : Yaohua ( Equipped with Taiwan HIWIN ball screw guide rail )

# PART 03

## PART 03



## CUSTOMERS



## CUSTOMERS



**JCTC**<sup>®</sup>  
TERMINAL & CONNECTORS

阳光电源  
**SUNGROW**

**MARUNIX**  
东莞丸仁电子

**大洋电机**  
BROAD-OCEAN



**JAH** 上海金亨  
JINTING

**Welling**<sup>®</sup>  
威靈電機

**Amphenol**  
INDUSTRIAL PRODUCTS GROUP

**GREE** 格力

**Haier**



东风汽车  
DONGFENG MOTOR

**Valeo**  
Compressor

**DAIKIN**



HUAWEI

**NIKKISO**

**Amphenol**  
AssembleTech

**SIMTEK**  
新宝电器

**TE**  
connectivity

**中航光电**  
JONHON

**HIGA**

**Lenovo**

**LUXSHARE**  
立讯精密

**金信诺**  
KINGSIGNAL

**molex**<sup>®</sup>



# PART 04

PART 04



Contact Us





**CONTACT US**



**Scan the QR code to learn more**

**National Unified Consultation Hotline**

**Jinhua :** +86-13751296610

**Motiar :** +86-15917690792

**Dongguan Yixin Machinery Co., Ltd.**

**Address:**No.20,Chuangye Road,Houjie Town,  
Dongguan City.

**Email :** [sales@yxjx-cb.com](mailto:sales@yxjx-cb.com)

**Telephone:** 0769-85479877

**Official website:** [www.yxjx-cb.com](http://www.yxjx-cb.com)

# THANKS

- ❖ Technological Innovation
- ❖ Leading The Future

**Dongguan Yixin Machinery Co., Ltd**